



## 29 SELHURST CLOSE

PARKSIDE, SW19 6AY

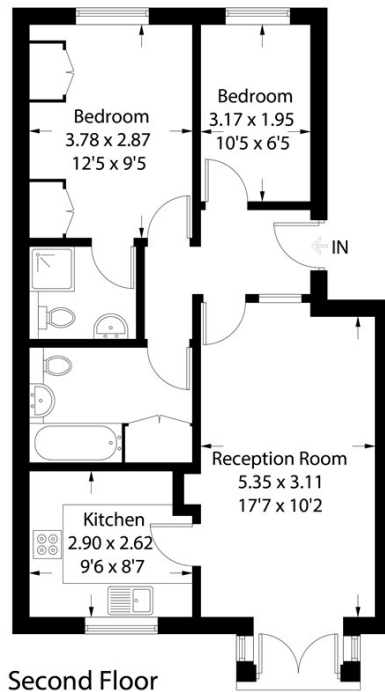
£2,200 PCM

A bright and well presented second-floor apartment set within this popular Wimbledon Parkside development, located directly opposite Wimbledon Common.

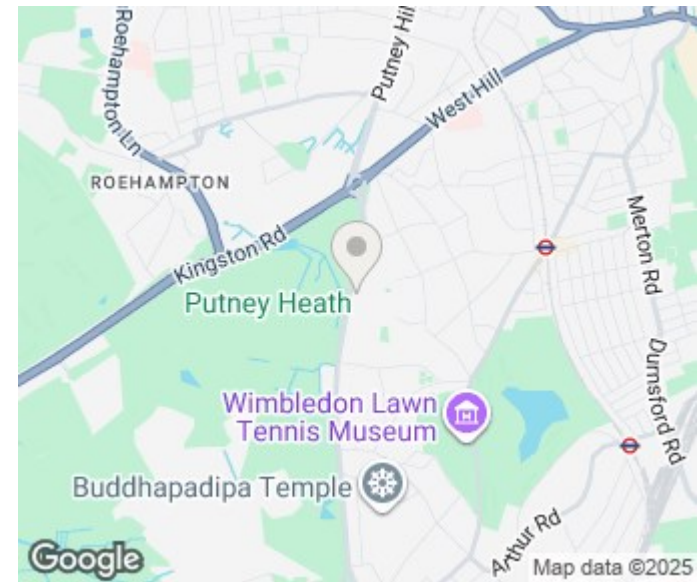
The property features a master bedroom with en-suite bathroom, a second double bedroom, a family bathroom, a spacious reception room with wood floors and Juliette balcony, and a fully fitted kitchen. Offered furnished, the apartment also includes a reserved parking space. Convenient transport links provide easy access to both Wimbledon and Putney.

## Selhurst Close, London, SW19

Approximate Gross Internal Area = 60.6 sq m / 652 sq ft



All measurements are in accordance to the RICS Code Of Measuring Practice.  
Measurements are approximate & only for illustrative purposes.  
© Property Visual Ltd - info@propertyvisual.com - www.propertyvisual.com - 01580 241 428



Energy Efficiency Rating		
	Current	Potential
Very energy efficient - lower running costs		
(92 plus) A		
(81-91) B		
(69-80) C		
(55-68) D		
(39-54) E		
(21-38) F		
(1-20) G		
Not energy efficient - higher running costs		
England & Wales	EU Directive 2002/91/EC	

**LAURENT**  
RESIDENTIAL

Barnes Lettings  
Essex Lodge  
1A Barnes High Street  
Barnes  
London  
SW13 9LB

0208 876 4466  
property@laurentresidential.co.uk  
www.laurentresidential.co.uk

Agents Note: Whilst every care has been taken to prepare these particulars, they are for guidance purposes only. All measurements are approximate and are for general guidance purposes only and whilst every care has been taken to ensure their accuracy, they should not be relied upon and potential buyers/tenants are advised to recheck the measurements